

# Test Report

No.: EFT20A00023

DATE: 29-Oct-2020

PAGE: 1 of 4

SHINKONG MATERIALS TECHNOLOGY CO., LTD.  
NO. 21-7、21-2, SONG-SU, JEN-SHAN LI, TA-CHI DISTRICT, TAOYUAN CITY, TAIWAN

The following sample(s) was/were submitted and identified by/on behalf of the applicant as :

Sample Submitted By : SHINKONG MATERIALS TECHNOLOGY CO., LTD.  
Sample Description : PET FILM  
Style/Item No. : SHINPEX  
Sample Material : POLYETHYLENE TEREPHTHALATE  
Manufacturer/Vendor : SHINKONG MATERIALS TECHNOLOGY CO., LTD.  
Country Of Origin : TAIWAN  
Sample Receiving Date : 13-Oct-2020  
Testing Period : 13-Oct-2020 to 29-Oct-2020

=====  
**Test Requested** : As specified by client, the sample(s) was/were tested with reference to Commission Regulation (EU) No. 10/2011 with amendments and hence Article 3 of European Regulation No. 1935/2004. Please refer to the result table for testing item(s).

**Test Result(s)** : Please refer to next page(s).

*Singh Hsiao*  
Singh Hsiao / Asst. Manager  
Signed for and behalf of  
SGS TAIWAN LTD.  
Chemical Laboratory - Taipei



PIN CODE: FD74249B

This document is issued by the Company subject to its General Conditions of Service printed overleaf, available on request or accessible at <https://www.sgs.com.tw/terms-of-service> and, for electronic format documents, subject to Terms and Conditions for Electronic Documents at <https://www.sgs.com.tw/terms-of-service>. Attention is drawn to the limitation of liability, indemnification and jurisdiction issues defined therein. Any holder of this document is advised that information contained hereon reflects the Company's findings at the time of its intervention only and within the limits of client's instruction, if any. The Company's sole responsibility is to its Client and this document does not exonerate parties to a transaction from exercising all their rights and obligations under the transaction documents. This document cannot be reproduced, except in full, without prior written approval of the Company. Any unauthorized alteration, forgery or falsification of the content or appearance of this document is unlawful and offenders may be prosecuted to the fullest extent of the law. Unless otherwise stated the results shown in this test report refer only to the sample(s) tested.

# Test Report

No.: EFT20A00023

DATE: 29-Oct-2020

PAGE: 2 of 4

SHINKONG MATERIALS TECHNOLOGY CO., LTD.

NO. 21-7、21-2, SONG-SU, JEN-SHAN LI, TA-CHI DISTRICT, TAOYUAN CITY, TAIWAN

## Test Part Description

No.1 : TRANSPARENT PLASTIC FILM

## Test Result(s)

PASS

Test Item(s)	Method	Unit	MDL	Result	Limit
				No.1	
Overall Migration (3% acetic acid, 40°C, 10 d)	With reference to EN 1186: 2002.	mg/dm <sup>2</sup>	3	n.d.	10
Overall Migration (10% ethanol, 40°C, 10 d)	With reference to EN 1186: 2002.	mg/dm <sup>2</sup>	3	n.d.	10
Overall Migration (50% ethanol, 40°C, 10 d)	With reference to EN 1186: 2002.	mg/dm <sup>2</sup>	3	n.d.	10
Overall Migration (rectified olive oil, 40°C, 10 d)	With reference to EN 1186: 2002.	mg/dm <sup>2</sup>	3	n.d.	10
Barium (Ba)	With reference to EN 13130-1: 2004, the analysis was performed by ICP-OES. (3% acetic acid, 40°C, 10 d)	mg/kg	0.25	n.d.	1
Cobalt (Co)		mg/kg	0.01	n.d.	0.05
Copper (Cu)		mg/kg	0.25	n.d.	5
Iron (Fe)		mg/kg	0.25	n.d.	48
Lithium (Li)		mg/kg	0.5	n.d.	0.6
Manganese (Mn)		mg/kg	0.25	n.d.	0.6
Zinc (Zn)		mg/kg	0.5	n.d.	5
Aluminum (Al)		mg/kg	0.25	n.d.	1
Nickel (Ni)		With reference to EN 13130-1: 2004, the analysis was performed by ICP-MS. (3% acetic acid, 40°C, 10 d)	mg/kg	0.01	n.d.
Specific Migration of Antimony (Sb)	With reference to EN 13130-1: 2004, the analysis was performed by ICP-OES. (3% acetic acid, 40°C, 10 d)	mg/kg	0.04	n.d.	0.04 (■1)
	With reference to EN 13130-1: 2004, the analysis was performed by ICP-OES. (50% ethanol, 40°C, 10 d)	mg/kg	0.04	n.d.	0.04 (■1)

This document is issued by the Company subject to its General Conditions of Service printed overleaf, available on request or accessible at <https://www.sgs.com.tw/terms-of-service> and, for electronic format documents, subject to Terms and Conditions for Electronic Documents at <https://www.sgs.com.tw/terms-of-service>. Attention is drawn to the limitation of liability, indemnification and jurisdiction issues defined therein. Any holder of this document is advised that information contained hereon reflects the Company's findings at the time of its intervention only and within the limits of client's instruction, if any. The Company's sole responsibility is to its Client and this document does not exonerate parties to a transaction from exercising all their rights and obligations under the transaction documents. This document cannot be reproduced, except in full, without prior written approval of the Company. Any unauthorized alteration, forgery or falsification of the content or appearance of this document is unlawful and offenders may be prosecuted to the fullest extent of the law. Unless otherwise stated the results shown in this test report refer only to the sample(s) tested.

# Test Report

No.: EFT20A00023

DATE: 29-Oct-2020

PAGE: 3 of 4

SHINKONG MATERIALS TECHNOLOGY CO., LTD.

NO. 21-7、21-2, SONG-SU, JEN-SHAN LI, TA-CHI DISTRICT, TAOYUAN CITY, TAIWAN

Test Item(s)	Method	Unit	MDL	Result	Limit
				No.1	
Specific Migration of Terephthalic Acid	With reference to EN 13130-1: 2004, the analysis was performed by HPLC/DAD. (3% acetic acid, 40°C, 10 d)	mg/kg	1	n.d.	7.5
	With reference to EN 13130-1: 2004, the analysis was performed by HPLC/DAD. (50% ethanol, 40°C, 10 d)	mg/kg	1	n.d.	7.5
Barium (Ba)	With reference to EN 13130-1: 2004, the analysis was performed by ICP-OES. (50% ethanol, 40°C, 10 d)	mg/kg	0.25	n.d.	1
Cobalt (Co)		mg/kg	0.01	n.d.	0.05
Copper (Cu)		mg/kg	0.25	n.d.	5
Iron (Fe)		mg/kg	0.25	n.d.	48
Lithium (Li)		mg/kg	0.5	n.d.	0.6
Manganese (Mn)		mg/kg	0.25	n.d.	0.6
Zinc (Zn)		mg/kg	0.5	n.d.	5
Aluminum (Al)		mg/kg	0.25	n.d.	1
Nickel (Ni)	With reference to EN 13130-1: 2004, the analysis was performed by ICP-MS. (50% ethanol, 40°C, 10 d)	mg/kg	0.01	n.d.	0.02

**Remark :**

- (■1) Limit is according to Commission Regulation (EU) No 10/2011 of 14 January 2011 with amendments.

**Note:**

1. mg/kg = ppm ; 0.1wt% = 1000ppm
2. mg/dm<sup>2</sup> = milligram per square decimeter
3. MDL = Method Detection Limit
4. n.d. = Not Detected = Less than MDL
5. The statement of compliance conformity is based on comparison of testing results and limits.
6. °C = degree Celsius
7. Test condition and simulant were specified by client.

This document is issued by the Company subject to its General Conditions of Service printed overleaf, available on request or accessible at <https://www.sgs.com.tw/terms-of-service> and, for electronic format documents, subject to Terms and Conditions for Electronic Documents at <https://www.sgs.com.tw/terms-of-service>. Attention is drawn to the limitation of liability, indemnification and jurisdiction issues defined therein. Any holder of this document is advised that information contained hereon reflects the Company's findings at the time of its intervention only and within the limits of client's instruction, if any. The Company's sole responsibility is to its Client and this document does not exonerate parties to a transaction from exercising all their rights and obligations under the transaction documents. This document cannot be reproduced, except in full, without prior written approval of the Company. Any unauthorized alteration, forgery or falsification of the content or appearance of this document is unlawful and offenders may be prosecuted to the fullest extent of the law. Unless otherwise stated the results shown in this test report refer only to the sample(s) tested.

# Test Report

No.: EFT20A00023

DATE: 29-Oct-2020

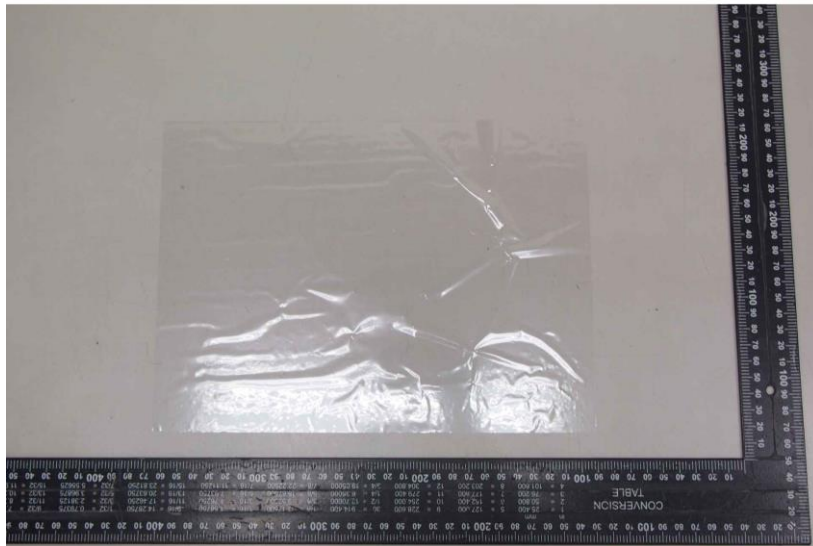
PAGE: 4 of 4

SHINKONG MATERIALS TECHNOLOGY CO., LTD.

NO. 21-7、21-2, SONG-SU, JEN-SHAN LI, TA-CHI DISTRICT, TAOYUAN CITY, TAIWAN

\* The tested sample / part is marked by an arrow if it's shown on the photo. \*

## EFT20A00023



\*\* End of Report \*\*

This document is issued by the Company subject to its General Conditions of Service printed overleaf, available on request or accessible at <https://www.sgs.com.tw/terms-of-service> and, for electronic format documents, subject to Terms and Conditions for Electronic Documents at <https://www.sgs.com.tw/terms-of-service>. Attention is drawn to the limitation of liability, indemnification and jurisdiction issues defined therein. Any holder of this document is advised that information contained hereon reflects the Company's findings at the time of its intervention only and within the limits of client's instruction, if any. The Company's sole responsibility is to its Client and this document does not exonerate parties to a transaction from exercising all their rights and obligations under the transaction documents. This document cannot be reproduced, except in full, without prior written approval of the Company. Any unauthorized alteration, forgery or falsification of the content or appearance of this document is unlawful and offenders may be prosecuted to the fullest extent of the law. Unless otherwise stated the results shown in this test report refer only to the sample(s) tested.